



Lung Protection Strategy: An Integrated Approach

The lung is a delicate structure that is highly sensitive. Mechanical ventilation can be detrimental if too much volume or pressure is delivered. And patients affected by lung disease are highly susceptible to ventilation-associated lung injury.¹

Employing a lung protection strategy for patient ventilation can help ensure that different zones of the lung (Fig. 1) receive the treatment they need.

Lung zone	Clinical need:
A = Atelectasis	▶ Keep the lung open ^{2,3,4}
B = Baby healthy lung	▶ Reduce tidal volume ^{4,5}
C = Cyclic opening/closing	▶ Stabilize the lung (PEEP) ⁶

CARESCAPE™ R860 Ventilator offers an integrated solution to lung protective ventilation.

Lung zone	CARESCAPE R860 advanced tools
A = Atelectasis	▶ FRC & static compliance ▶ FRC INview™ Software ⁷
B = Baby healthy lung	▶ P-V curve ▶ SpiroDynamics™ Software*
C = Cyclic opening/closing	▶ PEEP titration & Vd/Vt ▶ PEEP INview™ Software

The CARESCAPE R860 Ventilator was designed with an intuitive, swipe-screen navigation to simplify ventilation setup. The Lung Protection tools calculate FRC, providing the clinician with data for determining the optimal PEEP setting to individualize lung protective ventilation for each patient.

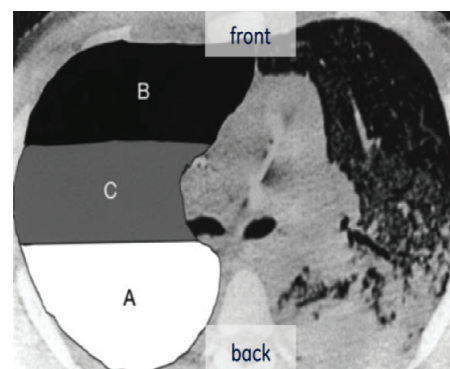


Figure 1. CT scan shows uneven distribution of disease.¹ Each zone has unique treatment needs.

A = Atelectasis **B = Baby healthy lung**
C = Cyclic opening/closing



References

- 1 E. D. Moloney and M. J. D. Griffiths,
British Journal of Anaesthesia 92 (2): 261±70 (2004).
- 2 Hedenstierna G, Acta Anesthesiol Scand 2012, 56: 675-685.
- 3 Gattinoni L, N Engl J Med 2006;354:1775-86.
- 4 Brunner J, Intensive Care Med. 2009, 35:1479-83.
- 5 Rouby JJ, Anesthesiology 2004; 101: 228-34.
- 6 Gattinoni L, Current Opinion in Critical Care 2004, 10:272-278.
- 7 Chiumello D, Crit Care Med 2008, 12:R150 doi:10.1186/cc7139.



© GE, 2021

Products may not be available in all countries and regions. Full product technical specifications are available upon request.

Contact a GE Healthcare Representative for more information. Please visit www.gehealthcare.com. Data subject to change.

GE, the GE Monogram, CARESCAPE, INview and SpiroDynamics are trademarks of GE. Reproduction in any form is forbidden without prior written permission from GE. Nothing in this material should be used to diagnose or treat any disease or condition. Readers must consult a healthcare professional.

April 2021
JB15389XX